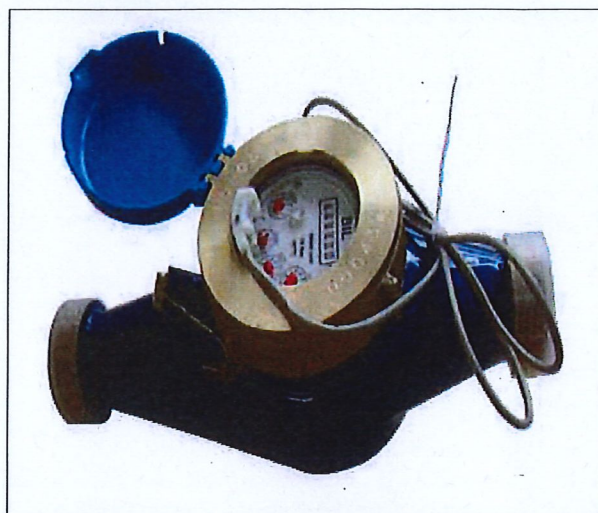


Multi-jet Water Meter – MT-EX-P 15-50mm

MT-EX-P Water Meter with Reed Switch Option

- The need to keep water sources under constant control, even where it is difficult to reach and read the water meter, has created a demand for systems that are capable of transmitting data to external data outlets, such as remote reading or control systems.
- The Special Version MT-EX-P Water Meter is equipped with a Reed Switch Pulser which may be connected to remote reading systems. The Reed Switch Pulser sends out electric signals per a preset water quantity.
- The Special Version MT-EX-P comes in several model variations, which indicate different pulse rates. To choose the variation best suited to your needs, please consult the table below.



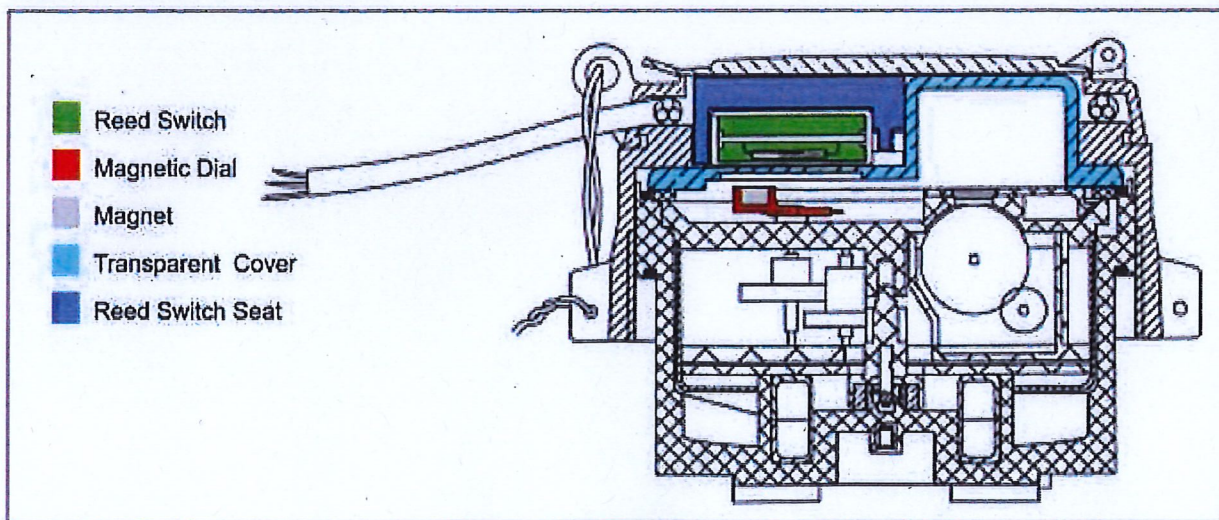
Data Output Options

Reed Switch Pulse	1 Pulse for each	
	1 Litre	10 Litre
15mm – ½"	x	
20mm – ¾"	x	
25mm – 1"	x	
32mm – 1¼"	x	
40mm – 1½"		x
50mm – 2"		x

Reed Switch Electric Data

- Switching voltage: 100 VAC/DC
- Switching current: 0.5 A max.

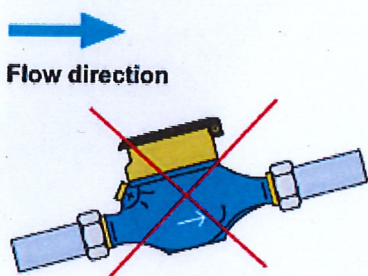
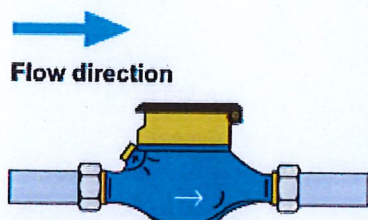
Register for the Output Option



Multi-jet Water Meter – MT-EX-P 15-50mm

Installation Recommendations

- Follow arrow direction
- Keep MT-EX-P Multi-Jet water meter in a horizontal position
- Install a strainer upstream of the MT-EX-P to eliminate debris that could damage or stop the measuring element.
- Prior to installing a MT-EX-P in a new line, flush the line to remove debris.
- Ensure that the MT-EX-P is full of water during measuring.



Ordering Guide

Example: MT-EX-P – 15-165 – 1 – S4 – (–)

MT-EX-P 15-165 1 S4 (–)				
TYPE				
	MT-EX-P			
SIZES		Code		
15 mm – 1/2" – 165		15-165		
15 mm – 1/2" – 190		15-190		
20 mm – 3/4" – 190		20-190		
20 mm – 3/4" – 228		20-228		
25 mm – 1" – 190		25-190		
25 mm – 1" – 260		25-260		
25 mm – 1" – 273		25-273		
32 mm – 1 1/4"		32		
40 mm – 1 1/2"		40		
50 mm – 2"		50		
CONNECTORS		Code		
With connectors		1		
Without connectors		2		
OUTPUT PULSE OPTIONS		Code		
1 Pulse for each – 1 liter		S5		
1 Pulse for each – 10 liter		S4		
1 Pulse for each – 100 liter		S3		
1 Pulse for each – 1000 liter		S2		
Output Pulse Preparation				
1 Pulse for each – 1 liter		Y/S5		
1 Pulse for each – 10 liter		Y/S4		
1 Pulse for each – 100 liter		Y/S3		
1 Pulse for each – 1000 liter		Y/S2		
CONNECTIONS Flanged 50 mm only		Code		
ISO-16		16		
ANSI-125		A1		
BST-D		BD		
ASTE		AE		
ABNT		B6		